

HISCKENO HK42 Rental

HK42 HISCKENO Mini Track Excavator is one of our pro series excavators with luxuries like AC, radio, adjustable seat, and 2 speed drives.



Paducah, KY
270-816-9655

Motor:
Kubota D1703

Fuel:
Diesel

Weight:
8,400 lbs

Standard Features

- ✓ 4-way Tilting Dozer Blade
- ✓ Hydraulic Thumb
- ✓ AC & Heater
- ✓ 24" Bucket
- ✓ Wipers
- ✓ LCD Display
- ✓ 23.2 GPM flow rate
- ✓ HD Pump & Drive
- ✓ Doosan Pumps
- ✓ Side-swing boom
- ✓ Side Mirrors
- ✓ Radio
- ✓ 2-Speed up to 3 MPH

Rental Pricing:

Daily - \$340

Weekly (7 Days) - \$1,040.00

4 Weeks (28 Days) - \$2,717.00

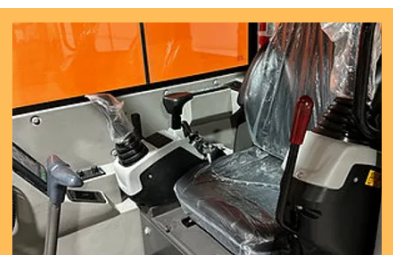
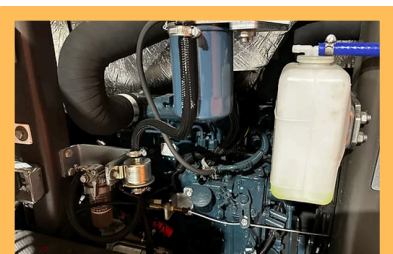
Size Chart

Height: 8' 3"
Width: 68"
Length: 16' 2"
Track Width: 12"
Track Length: 7'

Dozer Blade Length: 67"
Dozer Blade Width: 14"
Boom Length: 8' 4"
Arm Length: 55"
Max. Ground Clearance: 10"

Digging Specs

Max Outward Reach: 18'
Max Digging Depth: 10' 8"
Max Digging Height: 15' 9"
Max Dumping Height: 11' 2"



General Rental Information

HISCKENO HK42



**Paducah, KY
270-816-9655**

ZERO TAIL SWING COMPACT EXCAVATOR

Requirements:

- Must be 21 yrs of age to rent this equipment
- Must have proof on insurance
- Available to tow using ONLY $\frac{3}{4}$ ton truck or above
- Must be returned clean. Cleaning fee for this equipment is \$200.00
- Each day run time is 8 hours. Any run time over 8 hours will be considered an additional day's rent.
- Fueling charge will be incurred if fuel is not full.
- Fuel TYPE- Diesel fuel only.
- Equipment weight: 8400 lbs.
- Prepayment amount of \$500.00

Towing Requirements:

- $\frac{3}{4}$ Ton truck or larger with a towing capacity of at least 10,000 lbs.
- 2 2-5/16' trailer hitch ball is required
- MAX SPEED to tow this equipment is 55 MPH

Contacts:

Taylor Ballard - Sales Manager

taylor@qandaequipment.com

Taylor: (270) 816-9655

Steve: (270) 816-4445

Robb: (270) 210-2804

JP: (270) 556-3548

Jim: (270) 519-7017

Q&A Equipment Sales
3515 Clark's River Road
Paducah, KY 42003
www.QandAEquipment.com